

Another highlight will be *Knowle in 1963*, a film by Barry Holland, which some of you may have seen on YouTube. We are very grateful to Mr. Holland for giving us a high quality copy. Side displays will include maps from 1648 onwards, a piece on the Knowle enclosures, various books, newspaper cuttings and programmes for coronations and jubilees going back to the coronation of Edward VII in 1902. The exhibition will be for one day on June 4th. There will be a display of photographs of Knowle carnivals at Knowle Library for their open day on June 2nd; *Knowle & The Crown* will move to the library on June 5th; *Knowle Celebrations* will go to Barston Fete in August, Knowle Library in November and then to Solihull. More details of the Jubilee exhibition in the next newsletter.

PUBLICATIONS

Two new booklets were in print for the AGM: *Memories of Four Seasons* and *Gumley Wilson ~ Squire of Knowle*. *The Pride of Lyons* appeared just before Christmas. All them have sold well and proved popular as Christmas presents. Posters around the village were obviously noticed, as people were asking for copies by title. A leaflet listing all the Society's publications is in preparation. The booklet version of *The Greswolde & Mermaid Arms* is at final draft stage; we hope *The Canal Through Knowle* will be ready for the Jubilee exhibition.



High Street & the Greswolde, early 1900s

OUTSIDE EVENTS

When you receive this newsletter four outside events will have already taken place since the last one: on October 15th John Johnson gave *The History of Dorridge* to Dorridge Friendship Club; on November 3rd Elaine Warner gave *1000 Years of Knowle* to St. Margaret's Church Fellowship and again to Knowle W. I. on January 16th. Valerie Morton and Sylvia Moody led a guided tour of Knowle for Knowle & Dorridge Lions on November 20th. Coming up are a shortened version of *The Old Village (Part 1)*, which Jerry Tucker will give to Solihull MS Society (date to be determined) and *1000 Years of Knowle* for Knowle Library (Adult Learners' Week) on May 17th. Knowle C of E Junior School Local History Project takes place in March.

FUTURE PROGRAMME

Later events are on the programme card, with more details to come in the next newsletter. The Society is five years old this year. There is a consensus on the committee that we should celebrate in a small way at the AGM in October, almost certainly involving, at the very least, a cake. Further ideas will be welcome.

*We hope you enjoy your membership of the Society and look forward to seeing you soon.
The next newsletter will be circulated in May 2012.*



KNOWLE LOCAL HISTORY SOCIETY

Making History Live

Newsletter

Volume 4 No. 2
January 2012

A HAPPY NEW YEAR TO ALL OUR MEMBERS

CHAIRMAN'S REMARKS

The programme card for 2012 is enclosed, from which you will see that we have another full year ahead, if anything more so than last year. The programme will follow the now established pattern of four meetings a year, two in the afternoon and two in the evening during the lighter nights. There are two outside speakers and two in-house. A strawberry tea in July and a lunch at the Wilson Arms in November will feature once again. There will be three exhibitions at Knowle Library, plus more at Solihull. The highlight of the year will obviously be the Queen's Diamond Jubilee celebrations in June. We hope you will enjoy the events we have organised - suggestions for the programme are always welcome. *If you would like a lift to meetings - especially in the dark evenings - please let us know.* As usual we have a number of requests for talks and guided walks from other organisations, which we are happy to fulfil.

In the last few months the Society has had a more prominent public profile, primarily through an increase in the number of outside requests and the launch of new publications.

continued ...

Diary

February 1st - March 30th	Exhibition: <i>Books in Knowle</i> at Solihull Central Library
Wed February 15th 2.30 p.m. Tea 2 p.m.	Illustrated Talk: <i>The Greswolde & Mermaid Arms</i> Speaker: Elaine Warner. At the Guild House Publication launch: <i>The Greswolde & Mermaid Arms</i>
March 12th - 26th	Exhibition: <i>The Greswolde & Mermaid Arms</i> at Knowle Library
Wednesday April 18th 7.30 p.m. Coffee 7 p.m.	Illustrated Talk: <i>The Restoration of Kings Norton Grammar School</i> Speaker: Canon Rob Morris, Rector of Kings Norton At the Guild House.
May 28th - June 2nd	Exhibition: <i>Scenes From Knowle Carnivals</i> At Knowle Library during normal opening hours
Monday June 4th 10 a.m. - 4 p.m.	Her Majesty's Diamond Jubilee Exhibition At the Guild House
June 7th to June 18th	Exhibition: <i>Knowle & The Crown</i> at Knowle Library

As you will see from the Diary Box, once more it cannot accommodate outside events, which are mentioned below and on the programme card. The Society's activities have now expanded to the point of needing more help from members, which we are pleased to say has been forthcoming. In particular, we welcome Diane Jones (née Lyons) to the Exhibitions Group, and several people who have offered to help with the organisation of meetings.

Elaine S. Warner
01564 775887

ADMINISTRATION

About fifty members were at the AGM in October, when the existing officers and committee members were re-elected. Those who were there will know that the Society's total assets at the end of the year 2010/2011 were £789. Many thanks to those of you who have renewed your subscriptions. Membership currently stands at 167, with a few subscriptions still to come in. Some work has been done on expanding the web site, with the basic page layout and linking design established; but this is quite a large job and unexpected extra projects have inevitably put it back. Most site visits in the last month came from the UK (177), with a few from the rest of the world: Brazil 3, Australia 1, USA 5, Canada 2, Germany 1 with two (UK) on *Christmas Day*.

TALKS & SOCIAL EVENTS

After the AGM Valerie Morton spoke on *Kenilworth Road*, which included more detail than time constraints allow in a more general talk on the village. Mark Booth followed in February, with an excellent talk on *Warwickshire Castles*, on which he is an expert. The year ended with lunch at the Wilson Arms in November.

We start 2012 with an in-house talk by Elaine Warner on *The Greswolde & Mermaid Arms*, outlining the history of the Greswolde Arms from the early 18th century and its part in the life of the village. The correspondence between Henry Greswolde Lewis and John Constable has provided insights into the early history and some entertaining nuggets. The Society's booklet on the Greswolde will be launched on the same occasion; an exhibition at the library will follow in March (see also Publications and Exhibitions below).



Kings Norton Grammar School

Particularly thanks are due to David Patterson, who is the local expert on the Greswolde family, for his generous help. In April we are extremely lucky to have persuaded Canon Rob Morris, the Rector of Kings Norton, to talk to us on the restoration of the early 15th century grammar school. Some of you will know that this project was the winner of Griff Rhys Jones's BBC *Restoration* programme in 2004. It promises to be a most interesting evening.

With the increase in the Society's workload, the committee needs to devolve the organisation of meetings. The reception, membership and sales tables all have to be organised, as well as refreshments, setting out the room and setting up the projector. We are therefore about to form another informal group to take this on; happily there are several volunteers, to whom we are grateful.

TALKS & GUIDED WALKS

In addition to the talks mentioned above the Society has prepared another entitled *The History of Dorridge*, whose title is self-explanatory. It is an expanded version of an previous one written by Gillian Knight a few years ago. The Society now has eight talks available, with two more in preparation. We are often asked to give talks to other organisations; for everyone's convenience we are therefore preparing a leaflet giving details of each, which can be handed out or downloaded from our web site. A similar leaflet on guided tours of Knowle is also in preparation.



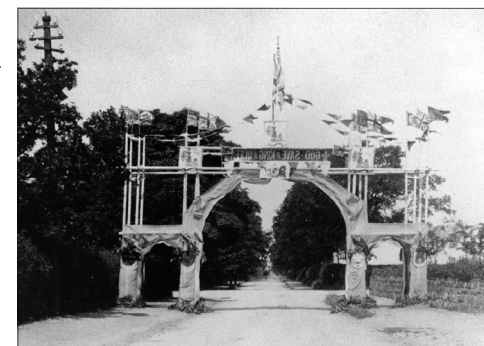
Station Approach, Dorridge

EXHIBITIONS

Last September saw *Knowle's First Grocer's Shop* on display at Knowle Library for Heritage Open Days. *The Railway Station* has been on show at Solihull Library for several months; *Books in Knowle* will replace it on February 1st. The next exhibition at Knowle Library is *The Greswolde & Mermaid Arms* in March, which brings us up to the Queen's Diamond Jubilee celebrations in June.

THE QUEEN'S DIAMOND JUBILEE EXHIBITION

The Society's contribution to the Knowle Jubilee celebrations is an exhibition in the Guild House. Two of the main features will be *Knowle & The Crown*, which outlines Knowle's associations with the English throne from William the Conqueror to Queen Mary in 1927; *Knowle Celebrations* starts with the medieval festivals of the Knowle guild through military and royal celebrations, the maypole, bonfire night and finally the post-war carnivals.



Coronation arch, Station Road, 1902